

3D Scanning

*Compact wide format flatbed scanner
for documents up to 18.5 x 25 inches*



***Faster, smaller, smarter!
World's most compact DINA2
flatbed scanner with 3D scanning***



- SCANS 18.5 x 25 INCHES, 19% MORE THAN DIN/ISO A2
- FADGI, METAMORFOZE, ISO 19264-1 COMPLIANT
- FULL SCAN IN LESS THAN 3 SECONDS
- CAPTURES 3D SURFACES, TEXTURES OF VARIOUS MATERIALS, BRAILLE PRINT
- DUAL LED ILLUMINATION, WITH DIFFUSORS FOR BEST RESULTS
- 1200 x 1200 DPI SCANNER RESOLUTION
- INTEGRATED 64BIT LINUX, INTEL I3 QUAD CORE, 8 GB RAM, 320GB HDD
- GIGABIT TCP/IP NETWORK INTERFACE
- SUPPORTS SRGB, ADOBE RGB, NATIVE COLOR SPACES
- SMALL ENOUGH TO FIT ON ANY DESKTOP
- LARGE WVGA COLOR TOUCHSCREEN FOR SIMPLIFIED OPERATION
- INTEGRATED WALK UP SCANNING SOFTWARE
- USB PORT 3.0 FOR WALKUP SCANNING
- AUTOMATIC CROP AND DESKEW
- REAL TIME DISPLAY OF SCANNED IMAGES
- VIRTUAL RESCAN, MODIFY IMAGES WITHOUT RESCANNING
- EASY INSTALLATION VIA SCAN2NET® TECHNOLOGY



WideTEK® 25, the only wide format flatbed scanner which also captures 3D surfaces in a quality suitable for inspection and quality control but compact enough for your desktop.

*Using the latest camera technology this scanner exceeds all criteria set forth in the FADGI *** guidelines, Metamorfoze Light and ISO 19264-1 level B.*

Professional quality, affordable prices, Made in Germany

Walk up scanning, LED illumination, 3D capture WideTEK® 25 delivers optimal scan results

WideTEK® 25 is extremely fast and delivers high resolution color, black and white or grayscale images in jpeg, tiff, pdf and most other standard image output formats. It combines production-ready design and uniquely compact dimensions in a new class of professional but affordable scanners.

WideTEK® 25 can scan nearly anything: from business cards to diagrams in A2 format, books, newspapers, maps, construction drawings, bound documents and more. The new scratch resistant, non-reflective borderless glass plate prevents bent edges on source documents.

Its most unique feature is the capability to capture 3D surfaces for industrial quality control and surface inspection applications. From Braille print on medication boxes to SMD parts on electronic boards, the superior image quality of the WideTEK 25 captures every detail.

The scanner needs less than three seconds to scan the largest format of 18.5 x 25 inches in plain mode at 300dpi and only 12 seconds in 3D mode at 600dpi.

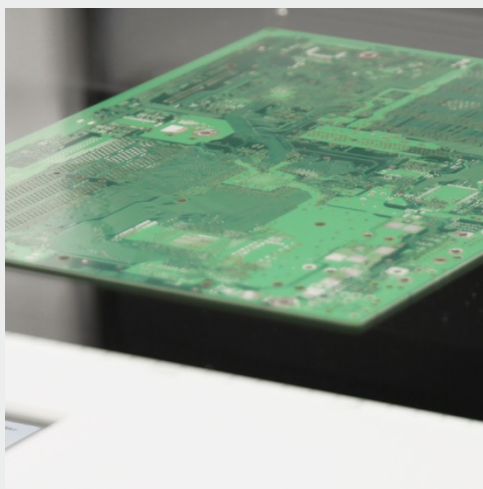
Operate the scanner either with a standard web browser, the built in touchscreen or a mobile device like an iPad or Android tablet, using our application for mobile devices Scan2Pad®.

Further highlights that make the WideTEK® 25 scanner the right choice for every application:

- Scan2USB – Walk up scanning to a USB device
- Scan2Print – Copy to networked printers or hot folders
- Scan2Pad® – Operation via tablets or other mobile devices
- Scan2Network – Output to network resources, SMB, FTP
- Output formats: PDF, PDF/A, JPEG, TIFF, PNM, multipage PDF and TIFF, DICOM and many more
- Virus resistant Linux OS
- OS independent, runs with Windows 7, 8, 10, Linux, Mac
- ScanWizard uses any browser: IE, Safari, Chrome, Firefox
- Remote maintenance, troubleshooting and firmware updates
- Wide color gamut, supports sRGB, Adobe RGB, native RGB

Options:

- Backlight unit for transparencies, films, photos, X-rays.
Replaces the standard lid and includes power supply
- Batch Scan Wizard for high volume scanning
- Attach external monitor for instant previews
- Scan2OCR – Background OCR option for Scan2Net scanners
(Only in connection with ScanWizard)
- Full Coverage Warranty – Up to 5 years, free spare parts & more



Large color touchscreen for simplified operation Industrial quality control of printed circuit boards 2D scan versus 3D scan, capture all details

Markets and Applications

WideTEK® 25, a valuable production device for numerous markets.

WideTEK® 25 Markets

- Architecture, Engineering, Construction, CAD
- Copy Services, Reprographics
- Media Control, Press Clipping Services
- Universities, Libraries, Registries, Government
- Industrial Quality Control
- 3D product presentations in catalogs and in the web

The applications are many and diverse. WideTEK® 25 fits nearly any application where you need wide format, production speed and quality.

WideTEK® 25 Applications

- Scanning maps, color posters, display graphics, artwork, photographs
- Archiving newspapers, periodicals, catalogs and magazines
- Scanning drafts and advertising on paper board, photos, fabrics, tiles
- Bound & stapled documents: contracts, accounting ledgers
- Surface inspection, print output control, Braille control
- Capture 3D textures of fabrics, tiles, stone, flooring, etc. for catalogs

The Scan2Net® platform is the technological foundation of all WideTEK® and Bookeys® scanners from Image Access. It replaces the proprietary scanner drivers and software that traditional scanners require with the fastest common, nonproprietary inter-device connection available: TCP/IP over Ethernet. With network interface speeds much higher than USB 2.0 or USB 3.0 scanners, Scan2Net® devices are able to reach unrivaled performance at extremely low connectivity cost.

Scan2Net® scanners feature a 64bit Linux based operating system, dedicated to scanner specific imaging and mechanical control tasks, maximizing scanning speeds and performance.

Scan2Net® Advantages

- 64bit Linux based computer, fast and virus protected
- Easy integration into existing network structures
- Only a single IP address is required to run the scanner
- Integration and remote access via the Intranet or even the Internet
- Scans directly to SMB, FTP, hot folders, USB, Email or the Cloud without external PCs
- Simple, intuitive operation, Java and HTML based
- Clear menu structure, operation via touchscreen, acoustical feedback
- Multilanguage support, customizable user interface

TECHNICAL DATA

Maximum Document Size	635 x 470 mm (25 x 18.5 inch), 19% more than DIN/ISO A2
Scanner Resolution / Optical Resolution	1200 x 1200 dpi / 1200 x 600 dpi
Scan Speed Color	Maximum format @ 300 dpi < 3 s, Maximum format @ 600 dpi < 6 s
Scan Speed Color 3D	Maximum format @ 300 dpi < 6 s
Color Depth	48 bit color, 16 bit grayscale
Scan Output	24 bit color, 8 bit color indexed, 8 bit grayscale, bitonal, enhanced halftone
File Formats	Multipage PDF (PDF/A) and TIFF, JPEG, JPEG 2000, PNM, PNG, BMP, TIFF (Raw, G3, G4, LZW, JPEG) AutoCAD DWF, JBIG, DjVu, DICOM, PCX, Postscript, EPS, Raw data
Scan Modes	Plain with diffused illumination, 3D with visible surface texture, any combination of the two
ICC Profiles	Embedded ICC profiles for sRGB, Adobe RGB, native.
Quality	Exceeds FADGI *** guidelines, Metamorfoze light, ISO 19264-1
Camera	2x Tri-Color CCD camera, 45,000 pixels, encapsulated and dust-proof
Light Source	Two lamps with white LEDs, integrated optical diffusor
Lamp Life Time	50,000 h (typ.)
Computer	64 bit Linux, Intel i3 quad core processor, 8 Gigabyte RAM, 320GB HDD for extra large jobs
Touchscreen	7 inch color WVGA (wide VGA) touchscreen
USB Port	1 USB Port 3.0
Interface	1 GBit Fast Ethernet with TCP/IP based Scan2Net® Interface
Dimensions	225 x 760 x 795 mm (8.9 x 29.9 x 31.3 inch) (H x W x D)
Weight	45 kg / 100lbs.
Electrical Connection	100 – 240 V ac, 47 – 63 Hz (external power supply, complies with ECO standard CEC level VI)
Power Consumption	< 0.5 W (Sleep) / 4,8W (Standby) / 35 W (Ready to scan) / 72 W (Scanning)
Operating Temperature	5 to 40 °C, 40 to 105 °F
Relative Humidity	20 to 80 % (non-condensing)
Noise	< 42 dB(A) (Scanning) / < 32dB(A) (Standby)
Approvals	ANSI/UL 60950-1, CAN/CSA C22.2 No. 60950-1; IEC 60950-1; GB4943.1-2011, GB9254-2008, GB17625.1-2012; IS 13252-1:2010; EN 55022, EN 55024; FCC 47 Part 15



Vikmans Multimedia (India) Pvt. Ltd.

517, Devika Tower, 6 Nehru Place, New Delhi-110019

Ph.: +91 11 26212325, 26472325, 8383063820, 9560600552

email : manish@vikmans.org, www.vikmans.com



Visit our homepage!

IMAGE ACCESS GMBH

Hatzfelder Str. 161-163
42281 Wuppertal, Germany
Tel.: +49 (0)202 27058-0
www.imageaccess.de

IMAGE ACCESS LP

2511 Technology Drive, Suite 109
Elgin, IL 60124, USA
Office: +1 (224) 293-2585
Sales: +1 (727) 612-0809
www.imageaccess.us