

WE ARE PIONEERING!



PRECISION ENGINEERING PROVIDES
SECURITY AND EFFECTIVENESS

DOCUMENT SCANNERS BY INOTEC

Being a German scanner manufacturer, our precision engineered reliable document scanners provide you with machines of unprecedented reliability, for use at one of the most crucial interface points in your business processes.

Competent staff, with high levels of education and training, coupled with ongoing focused professional development, ensures delivery of exciting product and service solutions that cement and optimise the effectiveness of your national and international business processes.



Longterm business relationships with partners and customers, in conjunction with the transparent cost effectiveness of InoTec products, facilitate the realisation of your goals.

InoTec's SCAMAX® 4x3 opens new dimensions of document capture. The use of innovative technologies ensures reliable, high performance scanning even with very difficult documents.

WE ARE NOT ALONE ON PLANET EARTH!

Regardless of where in the world we live, we are part of the human race. As rational thinking and acting people we are acutely aware of our responsibilities to society and the environment that makes our life possible. Mankind and the environment are inseparably linked.

This basic realisation has considerable impact on the corporate policy of InoTec GmbH. We like manufacturing in Germany. Even if it is a country with one of the strictest regulations for occupational health and safety, employment and environmental protection. Our scanners are built in a resource friendly way for long life expectancy. Manufacturing takes place under fair, socially responsible conditions.



**PRECISION ENGINEERING
PROVIDES SECURITY**

PRECISION ENGINEERING PROVIDES EFFECTIVENESS



UNIQUE

- Gigabit ethernet
Interface with a future.
Fast, safe and uncomplicated.
- TSCP
TouchScreen Communication Panel
Simplifies operation of advanced functions.
- PFC PaperFlowControl
Controls paper flow from the feeder to the output hopper and detects feeding errors.
- Document indexing
Generates user-defined index data during the scanning process and passes the data on to post processing.
- Intelligent endorser
Prints freely definable information pre- and/or post scan.
- Bates stamping
Stamps images electronically.

SIMPLE

- Ergonomic
Minimises operator fatigue because controls are easily reached.

High contrast touchscreen display ensures excellent screen readability.

Document sequence is always maintained to eliminate post scan sorting.
- Quiet operation
Ultra quiet and compact design easily fits into any office environment.
- Ease of use
Intuitive design ensures ease of operation, even after an upgrade.

NO LIMITS

- Advanced engineering ensures no volume limits
Continuous scanning – 24 hours a day, 7 days a week, 52 weeks a year.
- No service area limits
True worldwide service by InoTec technicians or authorised, factory trained service partners.

SECURE

- Contact feeder
Automatic, safe, reliable and controlled.
- Paper transport
Glassless

Gentle on papers

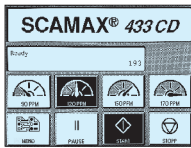
Simple and easy access everywhere.

Reliable processing, even with widely varying documents in the same batch.

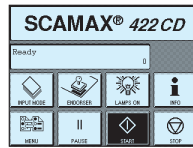
ECONOMICAL

- Low operating costs
Only few wearing parts with long life expectancy.
- Energy saving
Utilises an energy saving LED illumination system.

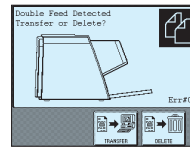
No warm-up time for the lamps, instantly useable upon power on.
- ENERGY STAR
Exceeds Energy Star requirements for energy consumption.
- Maintenance worldwide
Onsite maintenance is provided by authorized service partners.
- Compact design
Small footprint design saves valuable office space.



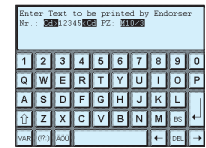
Scanning speed can be changed simply by touching the display.



Button assignment freely definable.



Full text messages and onscreen graphics (pictograms) provide instant reference.



Input via touchscreen keypad provides indexing and process control.

SELECTABLE

- Scan speed adjustable by button*
90, 120, 150, 170 ppm
180, 240, 300, 340 ipm
- Resolution
150, 200, 300, 400 and 600 dpi
- Image quality
Dynamic binarisation
Selectable gamma correction
- Document feed
Auto-feed (batch)
Hand-feed with or without paper separation.
- User formats
Document width: min. 60 mm
max. 317.5 mm
Document length: min. 60 mm
max. 2075 mm
- Paper thickness
Onion skin (filmsies) to Manila folder file covers.
- Image output
Bitonal, grey, color* – compressed or uncompressed, also mixed using Stream Control
Multi resolution from the same image
JPEG quality
Snipping function
- Color management
Supports ICC-profiles
- Double feed control
Three ultrasound sensors, individually controlled across entire document length and across individual document areas.
- Scalable processor performance
Demand orientated image processing

STRUCTURED

- Indexing
Event controlled indexing replaces costly software and reduces throughput times.
Utilises established filing structures, structure can be fully user-defined based on established organisation methods.
Index trigger – index triggers are activated by patchcode and manual input.
User definable counters, fixed texts and flags.
Export capability index values can be easily imported into document management systems.

COMMUNICATIVE

- Operator/machine interface
Utilises easy to use
TouchScreen Communication Panel
- Language
Instructions and error messages are simple to understand and multilingual.
- Full text
All error messages and screen references are in full text. No coded messages or instructions.
- Pictograms
Ensures fast orientation – clear, understandable, intuitive.

OPTIMISED

- Image enhancement PDT
Perfect Document TECHNOLOGY
Cropping/deskew
Black border removal
Bicubic deskew
Content based rotation
colrase™ *
Digital mixed color filter
coladapt™
Dynamic binarisation
Scan background
Selectable black or white.*
- Optical resolution
600 dpi
- Multistream, triplestream and dualstream capabilities, mixed stream
- Automatic color detection
With configurable settings.
- CCP (Color Calibration Program)
Software to calibrate colors using IT8 targets.
- Blank page detection
Intelligent, content based.

* depends on options/model

PRECISION ENGINEERING PROVIDES ADDED VALUE



EFFICIENT GIGABIT ETHERNET INTERFACE

Future proof, robust and industry standard with all computer and operating systems.



BELT PAPER TRANSPORT SYSTEM

Unique belt transport system that does NOT require cleaning, maintenance or replacement.



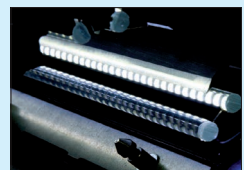
RELIABLE PAPER OUTPUT

via paper pre-former, adjustable side guides and extendable document stop.

Perfect Document TECHNOLOGY

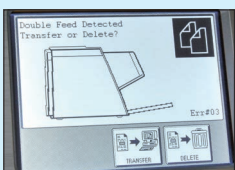
Complete image processing on board, e.g. gamma correction, digital color filtering, bicubic deskew, cropping and dynamic binarisation for perfect black & white images.

In addition, PDT offers functions like multistreaming (simultaneous output of color, greyscale and bitonal images), automatic blank page detection, content based rotation, snipping, automatic or patch-code controlled color detection and much more...



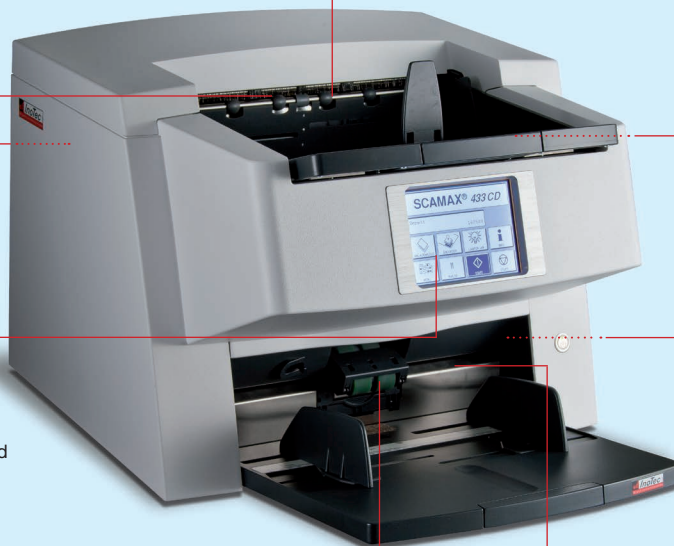
FOCUSING LED ILLUMINATION UNIT

- Extremely low energy consumption with maximum light intensity.
- Life expectancy is equal to the scanners life expectancy.
- No warm-up time and only minimal heat generation.



TouchScreenCommunicationPanel (TSCP)

Intuitive, simple operation by displaying easily comprehensible pictograms coupled with full text messages.



CONTACT FEEDER

Efficient and reliable document feed – even with very intermixed document batches. Minimal wear and tear, low cost and easily replaceable by the user.



GLASSLESS PAPER GUIDE

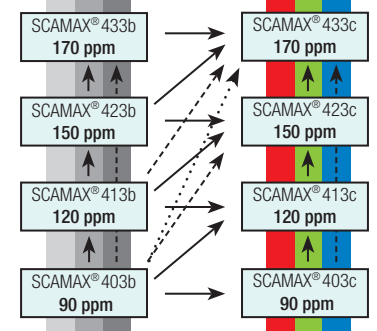
The unique construction of the scan area in SCAMAX document scanners does not need any glass paper guides. Even staples inadvertently left on documents cannot damage the scanner.

SCAMAX® 403/413/423/433 SCAN SPEEDS

Performance grades	SCAMAX® 403 bitonal / Color	SCAMAX® 413 bitonal / Color	SCAMAX® 423 bitonal / Color	SCAMAX® 433 bitonal / Color
Scan speed at 200/300 dpi				
Simplex A4 landscape	90 ppm	120 ppm	150 ppm	170 ppm
Duplex A4 landscape	180 ipm	240 ipm	300 ipm	340 ipm

Scanning speed is influenced by several factors. Some of these are the actual paper size and surface, as well as the PC being used (amount of memory and processor speed) and the scan application itself.

UPGRADE PATH



SCANNER-SPECIFICATIONS

Optics / onboard image enhancement

Scan process	CCD linescan camera
Optical resolution	600 dpi
Output resolution	150, 200, 300, 400 and 600 dpi Dual or multi resolution possible
Output Compression	CCITT Group IV; JPEG (also with ICC Profile) or uncompressed output
Lighting system	Focusing LED illumination unit
Binarisation	coladapt™ – dynamic with preview facility and pixel filter
Greyscale image	8 bit, 256 grey levels
Color image	24 bit, 16,8 million colors (true color)
Deskew	Bicubic deskew, black border removal, content based rotation
Gamma correction	10 bit after 8 bit, 3-level correction (color, black, white)
Color optimization	via CCP (Color Calibration Program)
Color filter standard	RGB color filter (eliminates red, green or blue)
Color filter option	colerase™ – digital mixed color filter with profiles
Indexing	Scan counter and 4 freely definable, event controlled counters for document indexing and endorsement; integrated patchcode decoder with 15 definable recognition tracks, image marker (flag)
Stream Control	Based on Automatic Color Detection and/or Event Control.
Blank Page Detection	Content-based dynamic procedure with 2 definable areas.

Document processing

Document input	Auto feed from stack or single sheet feed (hand feed), adjustable paper guides can be set asymmetrically if desired, integrated support for A3 size documents (input hopper plate extension)
Max. stack height	50 mm (approx. 500 sheets with 80 gsm paper)
Document width	60 mm to 317.5 mm
Document length	60 mm to 2075 mm ^① , for longer documents scan mode "long document" can be selected
Standard formats	ISO sizes: A3, A4, A5, A6, A7, B4, B5, B6, B7, US sizes: Ledger, Legal, Letter, Executive, Invoice
Max. throughput thickness	1,2 mm ^②

Document weight	30 gsm to 280 gsm ^②
Feed process control	Mechanical sheet separation and double feed control via three ultrasound sensor (can be independently programmed)
Document process control	PaperFlowControl (PFC), electronic length check can be activated
Scan area	Glassless with black scan background
Document output	Adjustable paper guides, can be set asymmetrical if desired, document stop can be tilted for long documents (>A4), paper removal tool
Endorser	Two integrated inkjet endorsers, programmable to print pre-scan on document front and/or post-scan on document back.
Bates stamping	Electronic image stamp
Daily duty cycle	unlimited

Interfaces

Operation	via graphic TouchScreenCommunicationPanel (TSCP)
Driver	ISIS®, TWAIN™, WIA
Supported operation systems	Windows XP, Windows Vista, Windows 7, either 32-Bit or 64-Bit and Windows 8.x, Windows 10
PC connection	RJ45 gigabit ethernet 10/100/1000 Mbit/s
Service connection	Sub-D connector 9-pin (RS-232) for service cable or foot switch

Technical data

Power consumption	Operating 80 – 160 ^③ Watt, sleep mode < 3.5 Watt, standby < 0.5 Watt
Input voltage	100-240 volt – 50/60 Hz – 2 amp (at 115 volt)
Environment	Temperature: 10 – 35°C, relative humidity: 30 – 80%
Dimensions	width: 510 mm / height: 365 mm / depth: 650 mm
Weight	39 kg
Noise emission	operating: < 64 ^③ dB (A), standby: < 41 dB (A)

Miscellaneous

Options	Digital mixed color filter (incl. filter generation tool ColErase™), additional image processor modules, white scan background (e.g. for transparencies).
Accessories	Ergonomic work table, foot switch, white calibration paper, cleaning kit, consumables kit, special vacuum cleaner, IT8 reference target.

^① Restrictions in relation to image processing settings and resolution are possible.

^② Maximum paper weight or thickness can vary and ultimately depend on surface condition and the flexibility of the material!

^③ Depending on model.



InoTec GmbH Organisationssysteme
Biedrichstrasse 11
61200 Woelfersheim
Germany

Phone: +49 60 36 97 08-0

Fax: +49 60 36 97 08-15

Internet: <http://www.inotec.eu>

e-mail: info@inotec.eu



Your contact:

Vikmans Multimedia (India) Pvt. Ltd.

517, Devika Tower, 6 Nehru Place, New Delhi-110019

Ph.: +91 11 26212325, 26472325, 8383063820, 9560600552

email : manish@vikmans.org, www.vikmans.com